

SHAMLEY GREEN PARISH MAGAZINE APRIL 2024



**HISTORY SOCIETY
VILLAGE FETE
PARISH ASSEMBLY**

**PAGE 6
PAGE 14
PAGE 20**

**Website contact:
www.shamleygreen.org**

CHRIST CHURCH, SHAMLEY GREEN

SUNDAY SERVICES

8.00 am Said Holy Communion (Book of Common Prayer)

10.00 am Sung Communion, followed by coffee in the Jubilee Room

Please check centre pages and Christ Church News for this month's services and for seasonal variations. If you require transport to get to and from any of the services this month, or indeed at any time of the year, please contact a Churchwarden (details inside back cover). You can also find full details on our website www.shamleygreen.org *What's On* page.

950 HOUSEHOLDS

do what you are doing now, every month. They read this magazine!

If you run a business tell Shamley Green about it. Advertise in the area's most cost-effective magazine.

Contact Karen for more information

See details below

CONTACT INFORMATION FOR THE PARISH MAGAZINE

Editor: Christine King

Tel: 537608 Email: mageditor@shamleygreen.church

Advertisements: Karen Anderton

Tel: 894014 Email: magadvertising@shamleygreen.church

Distribution: Ginny Wicks

Tel: 894873 Email: magdistribution@shamleygreen.church

The Disclaimers

**THE VIEWS EXPRESSED IN THIS MAGAZINE ARE THOSE OF THE CONTRIBUTORS
AND NOT NECESSARILY THOSE OF THE EDITOR, THE VICAR,
OR THE CORPORATE BODY OF THE CHURCH**

**THE ADVERTISEMENTS INCLUDED IN THIS MAGAZINE ARE PAID FOR AND AS SUCH ARE
NOT BEING RECOMMENDED BY BEING INCLUDED IN THIS MAGAZINE.
PLEASE CHECK AS YOU WOULD ANY OTHER SUPPLIER.**

What your support means to us



Our church annual meeting at the end of this month will include a report on the previous year together with thanks for all who contributed in different ways. One way in which many of you support us is, of course, financially and we want you to know how much we appreciate that and what your donations have enabled.

Celebrations and commemorations

In addition to keeping the church open every day for private prayer, we have held services every Sunday and many of you will have also joined us for Advent, Christmas, Mothering Sunday, Holy Week and Easter. Our Harvest Festival was followed by lunch and generous gifts of food brought by the congregation were distributed both to parishioners and our local food bank. Our annual All Souls service welcomed those for whose relatives we had conducted a funeral or burial during the year, alongside many from our local community, to a service of music, readings and prayer followed by tea and home-made cakes. Our Remembrance Sunday service included laying wreaths at the village war memorial outside the church. We have supported parishioners, and others with a connection to our church, through funerals, burials and memorial services, alongside baptisms and weddings.

Children and families

Our monthly Messy Church service on Saturday afternoons – an informal mix of craft activities, songs, stories, prayers and a lot of cake – has continued to prove popular as has our weekly Adult, Baby and Toddler group, Little Stars, which is greatly appreciated by local parents and grandparents for the support and friendship it provides. The vicar and other members of the congregation serve on the board of Trustees and governing body of our village school as well as leading collective worship and offering the church for festival services and R.E. lessons.

Care and support

Our clergy, Pastoral Assistant and Pastoral Care Team have provided pastoral care and support of those in crisis or need, including visits to hospitals and care homes and taking Holy Communion to those unable to attend a church service. In partnership with Village Care, we have also provided voluntary drivers together with teas and lunches for seniors.

Caring for our inheritance

Always mindful of the precious legacy of buildings and land, we have been diligent in maintaining our church buildings, halls and churchyard and making them available for community groups and activities.

Communications

This parish magazine, produced and financed by the church, was delivered free of charge to every household and offered via our church website, which also continued to host details of local organisations and activities.

Major and extraordinary expenditure

In 2023, in addition to our running costs, we also completed the following major essential works:

- Quinquennial Inspection and Report £1,247
- Electrical Inspection and Report £2,355
- Cutting back of churchyard trees £1,800

In 2024, following our statutory five-year inspection, we are undertaking major rewiring and replacement of electrical fittings and switches in our church and halls. This will cost in the region of £40 000. Can you help? Please see below for details.

How do we pay for all of this?

The costs of running our church plant and providing all the above - including the cost of a vicar, housing, training and pension – are met by voluntary donations. We are therefore hugely grateful to those who donate regularly via planned giving and standing orders (or the Parish Giving Scheme which relieves us of much of the administration and allows donors to link their donations to inflation), as this enables us to budget effectively and plan ahead. One-off donations are also appreciated, in particular when we have unusual expenses such as the current electrical works. Legacies are another source of support; if you would like information on remembering Christ Church in your own will, you can pick up a pack from the church porch or request one to be delivered to you.

How you can help

- If you are an existing donor, could you consider increasing your contribution, joining the PGS scheme or making an additional donation for the electrical works?
- If you donate occasionally, might you be able to support us regularly? Even a small monthly donation makes a big difference to us.
- If you are making or reviewing your will, could you consider including Christ Church? (Recent legacies have enabled us to refurbish our Church Hall, improve lighting, repair stonework and improve the facilities in the Jubilee Room.)
- Donate to the electrical works c/o The Vicarage or by BACS (call it 'Electrical'): Shamley Green PCC; Sort Code: 60-06-19; Account No: 61985171.

For further information about supporting Christ Church financially, please contact: *Treasurer* Tony Robinson 01483 229141; tonyandmandy@btinternet.com or *Planned Giving Officer* Nick Russell-Davis 01483 890719; nrusselldavis@compuserve.com.

You can also find details on our website www.shamleygreen.org under 'Supporting us'.

With thanks on behalf of Christ Church,
Sally.

The Reverend Sally Davies, Vicar. (01483) 892030; vicar@shamleygreen.church.

CHRIST CHURCH NEWS

Messy Church

Saturday 11th April 4pm; do join us. Details elsewhere in this magazine.

Annual Meeting of Parishioners and Annual Parochial Church Meeting (APCM)

Sunday 28th April in the Jubilee Room attached to the church after the 10am service

At these meetings parish church officers are elected or appointed and reports and accounts are presented for the past year. NB Only those on the electoral roll of the parish or who live in the parish and are on the register of local government electors are entitled to vote at the first meeting at which the churchwardens are elected; only those on the electoral roll of the parish are entitled to attend and vote at the APCM when we will be electing members of the Parochial Church Council (PCC). If you would like to go on the electoral roll, please contact Roger Penny 01403 752042 roger@penny1.myzen.co.uk.

We urgently need more people to join us on our PCC and to serve in other rôles. If you would be interested in serving as a member of the PCC or think you could offer 'time and talents' in other ways, please speak to the vicar as soon as possible.

From the registers

Funeral: we gave thanks for the life of Erica Parry on 8th March and of Joan Stevens on 27th March.

Burial: we committed to the earth with our prayers Jonathan Jenner on 16th February and Gill Bradfield on 25th February.

Donations to the church

As with many other organizations, charities and businesses, our income is not keeping up with our outgoings. A big thank you to all our donors who continue to support us with regular and one-off donations. If you would like to join them, you can make one-off contributions via our website www.shamleygreen.org or direct to our Shamley Green Parochial Church Council Donations Account: Acc. No. 30638712 Sort Code 60-06-19. If you would like to know how you can support our village church through regular donations by standing order, through a legacy or how to increase the value of your donation by Gift Aid, please contact one of the following:

our Treasurer Tony Robinson (01483 229141; tonyandmandy@btinternet.com).
or our Planned Giving Officer Nick Russell-Davis (01483 890719; nrusselldavis@compuserve.com).

Cover photograph courtesy of Alison Harding.

CHRIST CHURCH SHAMLEY GREEN



FOR ALL THE FAMILY
SPRING TERM 2024
Time 4.00pm-5.00pm

Stories from the Jesse Tree

Theme: **God promises.....**

MARCH 29th

Good Friday 10.00am

Meet on the green before processing the cross up to the church for a short family service & hot cross buns.

MARCH 31st

Easter Day 10.00am

Family Holy Communion Service & Easter egg hunt.

For further information please contact Gussie Walsh
Tel. 01483 275645

COPY DATE FOR THE MAY ISSUE:

TUESDAY 9th APRIL

to the Editor, please, by midnight.

Email willingly accepted, to: mageditor@shamleygreen.church

**IMPORTANT: CONTRIBUTORS PLEASE READ THE
GUIDANCE AT THE BACK OF THE MAGAZINE**

LITTLE STARS ADULT, BABY & TODDLER GROUP



**AT CHRIST CHURCH,
SHAMLEY GREEN**

**Tuesdays 10.00-11.30am in the Church Hall
During school term-time**

All welcome

Footpath up from the road or park in the church car park
opposite the church and walk down the path
through the churchyard to the left of the church

**For more information contact Sally
01483 892030 vicar@shamleygreen.church**

Shamley Green History Society

On Wednesday, 28th February, Shamley Green History Society held their AGM. The meeting was well attended with 55 people present. At the meeting, Michael Harding retired after 30 years as Chairman and Philip Dunn was elected as his replacement. Valerie Esplen also retired as Secretary after many years and Frances Sudbury was appointed as the new Secretary. The rest of the committee were willing to continue and were elected 'en bloc'. Philip thanked Michael for his long service and presented him with a book token, and Rosemary Derby, a founding member of the History Society, presented Valerie with a hydrangea plant.

After the meeting, Neil Harding showed some British Pathe newsreel clips from 1938 and 1941, depicting scenes from Shamley Green and Wonersh, and then some vintage films in colour from 1988 and 1991. The films showed some of the older houses in Shamley Green, some dating from 14th century, the house which had been lived in by Alfred Hitchcock, and E.H. Shepherd's studio. There were also scenes showing children in the village school and the choir in the church. It was good to see that Shamley Green is still just as beautiful as it was then, but some things had changed, such as the village postman doing his rounds on his bicycle!

The next illustrated talk by Carolyn Smith on "Surrey Arts and Crafts Architecture" will be on Thursday 25th April on 2.30 p.m. In the Arbuthnot Hall, followed by tea and biscuits. Non-members will be welcome for a fee of £3.00.



Frances Sudbury



NEWCOMERS' PARTY 2024

The Annual Shrove Tuesday Newcomers Party was held on 13 February this year in the Arbuthnot Hall.

This is where representatives of the many Clubs and Societies in Shamley Green gather to welcome Newcomers to our village from the past year, for a relaxed, social evening enjoying pancakes and wine – not to be missed if you are new to Shamley Green!

My thanks to Margaret Goodchild and the Functions Committee for keeping everyone supplied with pancakes, and to Tom Cornwell, who has provided the delicious pancake mix for nearly 50 years.

Next year's Party will be on **Tuesday March 4th**.

Alison Harding, Good Neighbour Scheme

SHAMLEY GREEN LAKE DISTRICT TOUR 19TH – 23RD MAY



The Shamley Green House & Garden Tour of the Lake District commences on the 19th May for 5 days. A UNESCO World Heritage Site, The Lake District offers beautiful landscapes, picturesque villages, historic houses and gardens. Late spring is the ideal time to visit this area with Rhododendrons and Azaleas being in their prime.

Visits include Samlesbury Hall,

Levens Hall, Rydal Mount, Dove Cottage and a cruise on Coniston water to Brantwood. The group will be staying at The Newby Bridge Hotel which overlooks Lake Windermere. RHS Bridgewater will be visited on our journey home.

A few places are still available for anyone interested. For further information and a detailed itinerary please contact: Penny Hodgson at pennyhodgson@uwclub.net or tel. 01483 898779

A note from the Cinema Team.....

Thank you to everyone who has supported the Cinema for the 2023/2024 Season. The Team enjoyed choosing the films and setting up but the real pleasure is in bringing the community together with a glass of wine and an ice cream, or a packet of Maltesers in our Vicar, Sally's case.

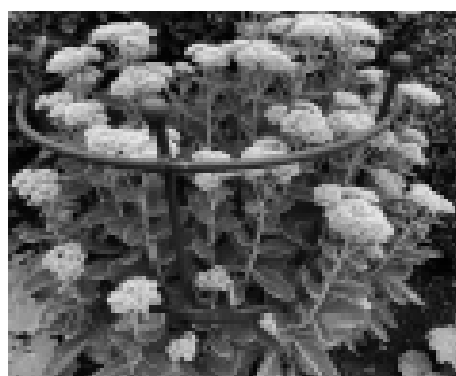
The 2024/2025 Season will kick off on Friday 4th October with One Life, starring Anthony Hopkins

Saturday 23rd November film to be confirmed. Having been to see Wicked Little Letters at the Cinema this week (which we did enjoy) we think the choice language may not be appropriate for us to show it in the Hall.

SHAMLEY GREEN BROCANTE

SATURDAY 20 APRIL 2024

Arbuthnot Hall, The Green, Shamley Green GU5 0UA



NEW FOR 2024!
Early Bird entrance
for those wanting to
get a head start!
£8 entry on the door
from 9.30 - 10.30am for
early birds.

Normal entry from
10.30am £4 on the door



Spring Fair at Arbuthnot Hall

Join us for our Spring Brocante Fair, showcasing local brands, merchants and makers. Find a selection of antiques, vintage furniture, textiles, jewellery and homewares. Early Bird entrance 9.30am - 10.30 am, £8 on the door.

Normal entry 10.30am - 4.00pm, £4 on the door.

Legendary bacon butties, delicious soup and vegetarian options will be on sale along with tea, coffee & cakes.

Follow us on Instagram: [@shamleygreenbrocante](https://www.instagram.com/shamleygreenbrocante)

See website for more details: www.arbuthnothall.org.uk



ARBUTHNOT HALL
SHAMLEY GREEN

A historic Arts & Crafts village hall situated in a beautiful, rural setting in the heart of Shamley Green

Home to many local clubs and regular activities, Arbuthnot Hall is available for booking private events such as meetings, exhibitions and parties. It has a modern, well equipped kitchen and bar and can cater for up to 150 people.

- Fully equipped kitchen
- Disabled access
- Separate bar area
- Car parking
- Toilet facilities
- Stage

**To discuss your booking requirements please contact
Ali Bull 01483 892254 hall.manager@arbuthnothall.org**

Arbuthnot Hall Development News!

The Trustees of Arbuthnot Hall have launched an initiative to secure this community asset for the future and we hope that we can count on your support. Please view our website:

www.arbuthnothall.org/fundraising

where you can see plans for the proposed development of the Hall.

You can also read details of our fundraising drive, including how to become a Friend Of Arbuthnot Hall.

**If you would like to discuss making a donation, or providing help for the redevelopment, then please contact:
Jon Watson: chair@arbuthnothall.org**

www.arbuthnothall.org

Feeling lonely? Fancy a tasty lunch and a friendly chat?

Then join the Villages Wednesday Club. We meet at Blunden Court, Bramley every Wednesday 10am-2.30pm

For only £5 you get morning coffee, a freshly prepared lunch, entertainment and afternoon tea

For older people living in Shamley Green, Womersley, Bramley and the surrounding villages it's a lovely day out and a chance to meet old friends and make new ones!



The VILLAGES WEDNESDAY CLUB

open to anyone living in Bramley, Womersley, Blackheath, Shamley Green and surrounding villages



For more information contact the manager Nicola Mendelssohn

on 01403 470895 or email manager@fourvillages.co.uk or just pop in any Wednesday for a chat

Get in touch now either for yourself or for a member of your family.

We may be able to help with transport - please ask

more details on www.fourvillages.co.uk



POSTPONED UNTIL FURTHER NOTICE

AN AFTERNOON TO CELEBRATE
THE 30TH ANNIVERSARY OF
SALLY'S ORDINATION AS
A PRIEST IN THE CHURCH OF ENGLAND,
and 18 years as our vicar.



SATURDAY 11th May 2024 @ 7.30pm
THE ARBUTHNOT HALL, SHAMLEY GREEN

It's time to reserve your table!

Quiz Night for £15 pp including a cheese and paté supper with a pay bar.

Top Quiz Master - so book a table for your Team now!

All profits go to i-India - a charity based in Jaipur, India that provides love, food, shelter, education and vocational skills to street children and those rescued from bonded labour.

To reserve a table of 8 (or individual places) please contact Lyn Barber on 07973 415283 or email LynBarber@capeconsulting.com

SHAMLEY GREEN VILLAGE CARE

It's an organisation set up to provide transport (for example to hospitals, GP surgeries, chiropodists, shops) to any resident of Shamley Green Parish who is unable to drive themselves or use public transport easily.

It calls on a small band of volunteers who give their services free. A donation is suggested to cover the mileage and parking costs.

VILLAGE CARE WANTS YOU----- to get in touch if you have difficulties getting to the services you need.

Please phone Penny Hodgson 01483 898779
or
Lyn Barber 01483 893898



Bullimores



ESTABLISHED
1928

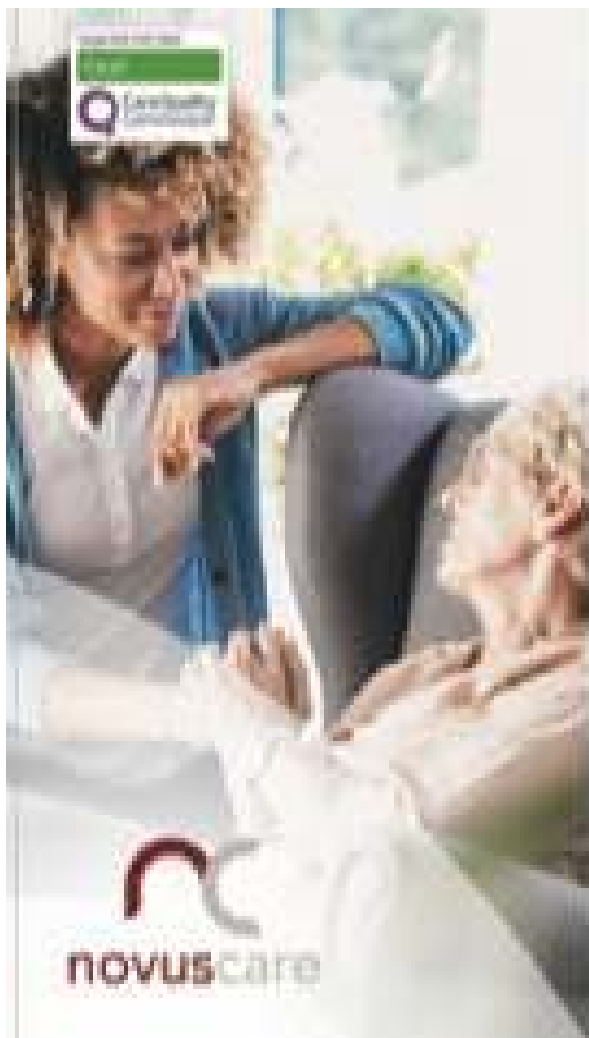
Accountants for Life

- Tax
- Accounts
- Probate
- Inheritance Tax & Executorship

Bullimores LLP licensed to carry out the reserved legal activity of non-contentious probate in England & Wales by the ICAEW



For advice, call us on: **01306 880880** | Email: **partners@bullimores.co.uk** | Web: **www.bullimores.co.uk**



Care in the heart of your own home

Are you or an elderly loved one looking for
extra care and support at home in
Shamley Green or the surrounding areas?
Then our local carers are here to help.

Novus Care is regulated by the Care Quality
Commission and can provide a qualified carer
to support your loved one in their own home
from just a visit per week to around the clock
live-in care.

For more information or to arrange a
FREE care assessment please call:
01483 494132 or email:
hello@novus-care.com

www.novus-care.com

Rowleys Centre for the Community

Victoria Road, Cranleigh

A friendly and welcoming
atmosphere and a great place
to meet up with friends
enjoy a meal or one of our activities.
You can also sign up to go on one of our
popular day trips or breaks.

There is no age limit at Rowley's,
we welcome everyone of all ages.
Our regular visitors are from all around
the Cranleigh district including
Shamley Green but if you live a little
further afield and would like to come
along, there are no restrictions.

Phone us on 01483 277155 or
Email: info@rowleyscranleigh.co.uk

**Touch For Health
Kinesiology**

**Feel Happier
Feel Healthier**

**Check out my website or call me
to find out more information,
or book into a workshop**

**Contact Janet 07908522136
newhorizonsawakened@gmail.com**

www.newhorizonsawakened.co.uk



SHAMLEY GREEN VILLAGE FETE AND FUN DOG SHOW



FUN DOG SHOW

**CLASSES FOR EVERYONE: CUTEST PUPPY, BEST
LOOKING, BEST CONDITION, PLUS LOTS MORE!**

**DRESS UP WITH YOUR
DOG AND ENTER "DOES
MY OWNER LOOK LIKE
ME?"**



VOLUNTEERS WANTED

**TO HELP WITH MORNING SET-UP AND AFTER-FETE
CLEAR UP**

**TO VOLUNTEER PLEASE CONTACT
JOCELYN.MONK@BTINTERNET.COM**

07885 529538

WWW.SGVILLAGEFETE.COM

SHAMLEY GREEN VILLAGE FETE AND FUN DOG SHOW



**SATURDAY
8TH JUNE 2024**

SAVE THE DATE!

WWW.SGVILLAGEFETE.COM
TIMHARLOW2004@AOL.COM

CHRIST CHURCH DIARY OF EVENTS – APRIL 2024

- | | | | |
|-----------|------------------------|-----------------|---|
| 7 | Sunday Easter 2 | | Readings: Acts 4:32-35; John 20.19-end |
| | | 8.00am | Said Communion (BCP) |
| | | 10.00am | Sung Communion |
|
 | | | |
| 9 | Tuesday | | Magazine copy due by midnight |
|
 | | | |
| 13 | Saturday | 4.00pm | Messy Church |
|
 | | | |
| 14 | Sunday | Easter 3 | Readings: Acts 3.12-19; Luke 24.36b-48 |
| | | 8.00 am | Holy Communion (Book of Common Prayer) |
| | | 10.00am | Sung Communion |
|
 | | | |
| 15 | Monday | 10.00am | Home Group, Jubilee Room |
|
 | | | |
| 16 | Tuesday | 10.00am | Little Stars Adult, Baby & Toddler Group, Church Hall |
|
 | | | |
| 21 | Sunday | Easter 4 | Readings: Acts 4.5-12; John 10.11-18 |
| | | 8.00 am | Holy Communion (Book of Common Prayer) |
| | | 10.00am | Sung Communion |
|
 | | | |
| 25 | Tuesday | 10.00am | Little Stars Adult, Baby & Toddler Group, Church Hall |

28	Sunday	Easter 5	Readings: Acts 8.26-end; John 15.1-8 8.00 am Holy Communion (Book of Common Prayer) 10.00am Sung Communion followed by the Annual Meetings
29	Monday	10.00am	Home Group, Jubilee Room
30	Tuesday	10.00am	Little Stars Adult, Baby & Toddler Group, Church Hall
MAY			
2	Tuesday	10.00am	Little Stars Adult, Baby & Toddler Group, Church Hall
5	Sunday	Easter 6	Readings: Acts 10.44-end; John 15.9-17 8.00 am Holy Communion (Book of Common Prayer) 10.00am Sung Communion



WOODFORD

Family Funeral Service

FAMILY RUN FUNERAL DIRECTORS & MONUMENTAL MASONS
QUALIFIED, EXPERIENCED STAFF AVAILABLE 24 HOURS A DAY EVERY DAY

01483 276500

Dobbe House, Ewhurst Road, Cranleigh, GU6 7AA

www.familyfuneralservices.co.uk

Our Family Serving Your Family



Shamley Green Pest Control



Telephone: 01483 299307





BEVAN WILSON
Physiotherapy & Sports Injury Clinic

Highly regarded clinic in Sharnbrook, Bedfordshire, UK, specialising in **Rehabilitation and Women's Health**, providing professional treatment and specialist advice to help you achieve your goals...

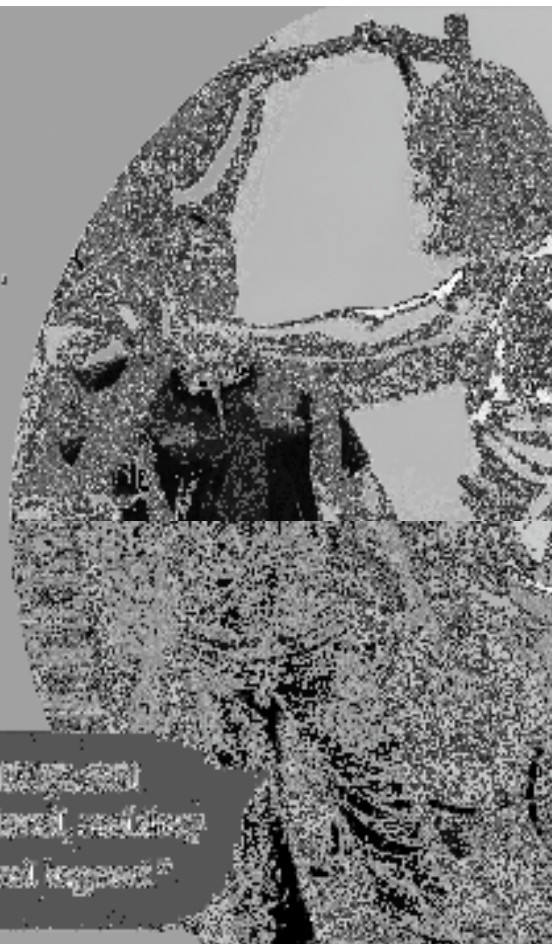
- Physiotherapy & Rehabilitation
- Sports Injuries & Massage
- Dental & Joint Pain, Migraines
- Dietetics & Joint Coaching
- Men's & Women's Health
- Acupuncture & Chiropractic
- Post-operative Rehabilitation
- Wounds, Warts & Fingers
- Mobility, Stability & Balance
- Neurological Rehabilitation
- Children & Adolescents
- Home & Own Home Work

01455 424005

info@bevanwilson.co.uk

www.bevanwilson.co.uk

"The most important part of a physiotherapist's job is to help you achieve your goals."



GETTING YOU BETTER TOGETHER FOR 25 YEARS!



Active Living 60+

Exercise class for the over 60's

Improve your balance, strength & general fitness

Every Tuesday at 2.30pm at The Arbuthnot Hall,
Sharnbrook Green

For further information please call Anna on
07768 922641 or
email: anna.pritchard@live.co.uk

Shamley Green Gardening Club

March's meeting was an exciting first for the club when we moved to Longacre School's sports hall for the annual "celebrity gardener" evening. This larger venue meant that just short of 180 people were able to listen to a fascinating and humorous talk by plantswoman and horticulturist Christine Walkden. Christine is well known to devotees of Gardeners Question Time for her pithy comments and sound common-sense gardening but her talk on this occasion was about her introduction to gardening (she had her first allotment aged 10) and her subsequent determination and success in obtaining prestigious horticultural positions despite very little formal schooling, no academic qualifications and being female.



She was funny, passionate and inspirational – well worth the choice of a larger hall!
Linda Penny

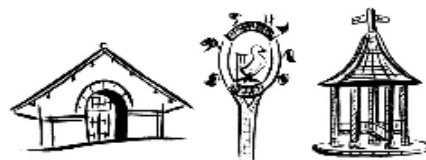
Next meeting AGM with Wine and Cheese
Tuesday 2nd April 7.30pm Arbuthnot Hall

Subscriptions (£15 single £25 couple) will be due at the AGM or can be paid beforehand by BACS, cash or cheque. Contact Aurelle for details if needed.

Tel. 01483 892114

ARBUTHNOT HALL 200 CLUB MARCH DRAW WINNERS

1 st	Mrs F Whittall	Long Common
2 nd	Mrs C Pick	The Green
3 rd	Mrs V Esplen	Lords Hill Common
4 th	Mr A McGee	Lords Hill Common



PARISH ANNUAL ASSEMBLY

16th May 7.30 pm Blackheath Village Hall

Come and hear what is going on in the Parish in Wonersh, Shamley Green and Blackheath (and join us for a glass of wine):

- Do you want 20 mph zones in the village centres?
- Seminary Developer to pay £235,000 for adjacent footpath upgrades and Wonersh village road safety – where would we put a mid- carriage pedestrian island?
- What is happening to the Villagers Pub?
- What are the Shamley Green Environment Group's plans?
- Why has the Parish Council precept part of the council tax gone up over 25%?
- What are the plans for the newly purchased Barnett Fields and Woodland?
- Is Gerald's Wood to be sold?

We rotate the annual meeting around the villages and this year it will be in Blackheath.

Save The Date: Village Rogation Walk Sunday 12 May

Come join us for the traditional annual village walk around part of the parish boundary!

It's an enjoyable way of exploring and appreciating the beauty of our local environment as well as meeting and talking with fellow walkers. The rogation walk is organized by the church and intended for the whole community.

This year's walk starts at Christ Church at approximately 11:15 AM after the 10 o'clock service (Services will take place as normal, at 8:00 and 10:00 AM).

The walk this year covers the northerly direction, with a refreshment stop early into the walk.

Further details will be given in the May edition of the parish magazine, along with a map of the route.

Dogs are welcome but should be kept on a lead.

Any enquiries, please contact Trevor at 07814 487234 or Joelle at 07825 422344





BrightCare

Care for the elderly in the comfort of their home.

Building and nurturing relationships that last for life.



Our consistent and undivided support for those you love means they can remain in the comfort and familiarity of their own home. With Bright Care, our total focus on your family's needs means we are there for you and your family, every step of the way.

If someone you love is on your mind, start a conversation with us to see how we can help.

Bright Care Cranleigh

📍 264 High Street, Cranleigh, GU6 8RT

✉ cranleigh@brightcare.co.uk

☎ 01483 617 121

www.brightcare.co.uk



Member


LONGACRE SCHOOL
 JUNIOR SCHOOL




**DISCOVER GUILDFORD'S
HIDDEN GEM...**
Open Morning
 Monday 20th November

Contact our registration 01483 699222 or by
 email an admission@longacreschool.co.uk to
 register for our open morning or a book a tour

www.longacreschool.co.uk


 SCAN ME



- All aspects of Tree Surgery
- Fencing
- Hedge cutting
- Kiln dried Firewood and Kindling (Locally sourced and ready to burn assured)
- www.ljntreesurgery.com
- www.ljnfirewood.com
- info@ljnlttd.co.uk

Luke- 07734703854





Surrey Green Burials

Funeral Directors Ltd

The Greenest Funeral Directors for miles around protecting our environment.

Please visit our website and download your free brochure.

236 High Street Dorking Surrey

rh41qr

www.surreygreenburials.co.uk

Email:

enquiries@surreygreenburials.co.uk

T: 01306740407

M: 07483353567 (24 hrs)



Specialising in Residential new build
and conversion work to all types of dwellings

Contact : **Mike Whittall**

**1 JERSEY COTTAGES, LONG COMMON
SHAMLEY GREEN SURREY GU5 0TG**

T 01483 890783

M 0779 5425921

**m.whittall@archatech.co.uk
www.archatech.co.uk**

RIBA Registered: 3149008

**KAREN REGAN DipFHP MCFHP MAFHP
MOBILE FOOT HEALTH PROFESSIONAL**

KEEPING YOUR FEET HAPPY AND HEALTHY AT HOME!



Karen Regan
Foot Health Professional



MEMBER OF
THE BAFHP

WWW.HEARTANDSOLE.SITE

07776 309567



The House Vet

What makes us different?

- Out of hours service at our Cranleigh Clinic
- Continuity of care with personable staff
 - House visit availability on weekdays
- Appointments available 7 days a week
- Instantly message our team on PetsApp 24/7
 - Healthy Pet Club for 10% discount
 - Specialised cat clinic

Cranleigh:
01483 272999
Newdigate:
01306 773300

Proudly independent



sitec it

Computer support

- Desktop and laptop repairs
- PCs & Mac sales and advice
- Increase speed & memory
- Email & gmail
- Home support
- Broadband & wifi
- Data backup and recovery
- Business support
- Phones & data cabling

fsb^{co}
Experts in Business



SITEC are a local, family run company who have been helping business and home users for the past **15 years**

We offer **onsite** and remote **support** to keep you and your business **working**

Broad oak Lodge
Horsham Road, Cranleigh
Surrey GU6 8DJ

01483 806060 sitecit.co.uk sales@sitecit.co.uk

Wonersh Parish Council

BLACKHEATH • SHAMLEY GREEN • WONERSH

www.wonershparish.org



Please telephone any of us if you have a local issue you would like to discuss. Or contact the Parish Clerk Lisa Davison on 892601 or by email at clerk@wonershparish.org or visit the office in the Wonersh Sports Pavilion on Tuesday mornings 1000-1200 – please call the clerk for an appointment on 01483 892601.

Or come to the Parish Council meeting on the second Thursday of each month (except August and December) to raise your concerns.

The Borough Councillor representing Wonersh and Shamley Green is now Councillor Michael Goodridge 535108, 07502 315366

Your councillors:

Anthony Shutes (Chair)	890831
Mike Band	892880
Chris Howard	894437
Kevin Sloan	898472
Ben Knight	07966 269182
Stephen Lavender	07966 533951
Rob Merriman	07711654699
George Sobek	07354809130

We are currently seeking applications for one councillor to represent the Wonersh ward. An application form is available via the website and you can find out more by contacting your local parish councillors or the Clerk.

Your life story in a book

A perfect family gift



Share your unique life story with your family & friends

- Professional biographer
- Friendly, personal service
- Short & long book options



Contact Katarina 07982 465351
katarina@lifestoryinabook.com
lifestoryinabook.com



BEAVERS



Are you ready to embark on a journey to shape the future generation?

We're seeking passionate and adventurous individuals of all ages to join our ranks and help Scout discover their true potential.

Your enthusiasm and guidance can shape the future of our Scouts and contribute to a stronger, more resilient community. Beavers is age 6-8 and we really do have a role for everyone!

Join us today!

To learn more about this exciting opportunity, send us an email and join us in empowering the next generation.



1stwonershgsl@gmail.com



Birtley House

Nursing Home & Mews Flats



Save 30% on care fees
with our West Wing apartments*

We understand the cost of care is high, and we want to help your money go further.

*Approximate potential saving is subject to payment of an initial capital investment to purchase a West Wing apartment, and is in comparison with our regular nursing home room fees.

Enjoy supported-living with our Birtley Mews 2 bedroom flats

Birtley Mews is a development of 8 luxury supported-living flats designed for those seeking a more independent life, which boast spectacular views and are surrounded by landscaped gardens, lakes, woodland and an abundance of wildlife.

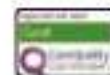


For further information and to arrange to a viewing please contact:

Frank Whalley 01483 892 055

Birtley House, Bramley, Guildford, GU5 0LB

www.birtleyhouse.co.uk



RESPITE CARE • LONG-TERM CARE • PALLIATIVE CARE • INDEPENDENT LIVING



THE JUBILEE ROOM AND CHURCH HALL SHAMLEY GREEN

A lovely rural setting within easy reach of Guildford
For all your meeting and party requirements., the Jubilee
Room and Church Hall are the perfect venue



- Church Hall newly refurbished in 2020
- Fully Equipped Kitchens
- Toilet Facilities
- Seating for 40-60 people (check individual venue for details)
- Jubilee Room has disabled access and facilities
- Crockery, cutlery and suitable furniture available
- Children's parties in Church Hall only
- Church also available for Quiet days
- Car Parking



To hire the Jubilee Room or the Church Hall please contact
Clare Stevens Tel: 01483 893211 Email: Lettingsec@hotmail.co.uk



— Traditional —
Butcher for 30 Years



— 01403 752859 —
Loxwood, West Sussex

**Locally sourced, quality meats
and full deli counter**

Local grass fed beef

Free range pork from Storrington

Free range duck & poultry

Local Sussex lamb

*Our delicatessen has a full selection of homemade pies,
cooked hams, salami, pâtés, English & Continental cheeses*

*We do our very best to source as many products as
possible from Surrey & Sussex farms and suppliers*



**Home Deliveries
Wednesday to Saturday**

POND MAINTENANCE AND CONSTRUCTION

All aspects undertaken including complete draindown, cleaning and repairs to ponds of any size.

To arrange a free estimate phone
David Smithers
01483 374620 (eves)
07732 541057 (mob)

Castle Nursery and Pre-School, Shamley Green

are now
Recruiting....



We are looking for an enthusiastic assistant or practitioner to join our Shamley Green Team

Please contact us on 01483 898811
or e-mail
shamleygreen@castledaycare.co.uk
for more information

01483 898811
Shamleygreen@castledaycare.co.uk



Castle Nursery and Pre-school
Guildford Road
Shamley Green
GU5 0RS



GONG AND TONIC

SOUND THERAPY IN SHAMLEY GREEN

RELAX, REFRESH, RESTORE

MUSICAL MAGIC USING A RANGE OF INSTRUMENTS TO SOOTHE BODY, SOUL AND MIND

SONIC VIBRATIONS STIMULATE THE BODY AND ASSIST YOU IN RELEASING TENSION.

PROVEN TO ASSIST WITH A RANGE OF AILMENTS AND AID RELIEF FROM PHYSICAL, EMOTIONAL AND MENTAL PRESSURES, ACHES AND PAINS.

FORTNIGHTLY SOUND BATHS AT WSG SCHOOL

INDIVIDUAL TREATMENTS AND SMALL GROUP SESSIONS

CONTACT: AMANDA 07798827643

WWW.GONGANDTONIC.CO.UK

Affordable Mac & PC Repairs

- Computer repairs
- Virus removal
- Network & Broadband
- Performance improvement
- Affordable websites
- Purchase advice

All explained in plain English
Drop off or I can come to you

Surrey Hills PC
T: 01483 608 242
M: 07771 665 863
www.surreyhillspc.co.uk
david@surreyhillspc.co.uk

ART CLASSES FOR ADULTS

COMMUNITY ROOM, GARDEN CLOSE
SHAMLEY GREEN, GU5



TUESDAYS: DRAWING CLASSES

10-12am or 1-3pm

THURSDAYS: ART CLASSES

10-12am or 1-3pm

FRIDAYS: ART CLASSES

10-12am or 1-3pm

Royal Academy trained teacher.
Small, friendly groups. Individual
approach encouraged, but guidance
always available through set worksheets.

CONTACT SARAH:

artikat@yahoo.co.uk



Home-Start in Waverley

*There for parents when they need us most,
because childhood can't wait*



Could you make a difference?

Do you have parenting experience?

With your knowledge and experience you could
be the vital support a family needs.

We are looking for caring, compassionate and
non-judgemental volunteers to
support families in the
Godalming and Cranleigh areas.

Find out more:

E: info@homestartwaverley.org

T: 01252 737453

Prima.

Accounting

Offering a friendly & personal service to
individuals and small businesses, covering
all accounting needs, including:

**COMPANY ACCOUNTS &
CORPORATION TAX RETURNS**

**SELF-ASSESSMENT FOR SOLE-
TRADERS & INDIVIDUALS**

Shamley Green based consultant
Frances Whittall

Contact: 07900 817454

franceswhittall@primaaccounting.co.uk

www.primaaccounting.co.uk

Mice • Rats • Moles Wasps • Cluster Flies Rabbit Fencing

PROTECTA

PEST CONTROL

Effective, Affordable Pest Control
for your property



- Local Registered Company
- Competitively Priced
- Professional, Personal Service

TEL: 01403 259972

MOBILE: 07833 557498

www.protecta-pestcontrol.co.uk

WONERSH U3A: WHAT'S ON IN APRIL 2024

The highlight of Wonersh U3A's calendar in April is a coach outing to an almost forgotten Tudor royal residence: Eltham Palace near Greenwich. This was owned and transformed in Art Deco style by the eccentric millionaire Coutauld family in the 1930s, and is now run by English Heritage.

Regular events this month comprise: Table Tennis, Country Walk, Pilates, Tai Chi at two levels, Art, Book Club, French and Latin sessions, Mah Jong, Listening to Music, Current Affairs, Speaker's Corner, and Pub Lunches. Wonersh U3A provides fun, friendship, fitness and learning sessions for the retired and semi-retired communities of Blackheath, Bramley, Chilworth, Shalford, Shamley Green, Wonersh, and all surrounding areas.

If any of these activities interest you, please contact: Deirdre on 07792 741749, or visit <https://u3asites.org.uk/wonersh>



www.cranleigharts.org

*Cranleigh Arts, 1 High Street, Cranleigh, Surrey
GU6 8AS*

01483 278001



Worried about something?
Don't put it off, Citizens Advice Waverley can help

For free, confidential, independent advice, call:
0344 848 7969
or visit:
Citizens Advice Waverley, Village Way Cranleigh
Mon: 10 to 4, Tue: 10 to 4, Fri: 10 to 4
waverleycab.org.uk



Loxwood Landscapes

Paul Gregson BSc Hons

- * Hard Landscaping
- * Soft Landscaping
- * Garden Design
- * Any project considered

for friendly advice and a free and prompt quotation please call Paul on

 **01403 753204 / 07949 312402**

or e-mail info@loxwoodlandscapes.co.uk

Notes for Contributors

All articles should be emailed to the editor at mageditor@shamleygreen.church by the 9th of the previous month. If this is not possible please contact the editor, Christine King on 537608, for individual negotiation.

Articles should be submitted as follows:

- In Arial font (easy to read)
- Size 10pt for text and 14pt for heading
- Justified both sides for text
- Centred and **bold** title (mixed case)
- Any tables should be discussed with the editor, as these do not always transfer to Publisher
- Original MS Office documents preferred to '.pdf's, which may distort when resized
- Photographs in .jpeg format and should not exceed 2 megapixels

You or the organisation you represent must hold the copyright to the image, i.e. you or they own it: unless told otherwise we will assume that you/they do so.

Please include photos where possible to grab readers' attention!

Adverts

Please contact Karen Anderton (details inside front page). Please email us 'camera-ready' adverts in .pdf, .jpeg or .doc format after agreeing fees with Karen.

NEIGHBOURHOOD WATCH

The main issue remains lack of reporting minor crimes, please help support our village and ensure you report issues and not ignore them. This can be done in confidence to Surrey Police on:

101 (the national non-emergency number) or

<https://www.surrey.police.uk>

As always in an EMERGENCY dial 999

If you want to give information about a crime or criminal activity without giving your name you can call the independent charity: **Crimestoppers on 0800 555 111**

WHO'S WHO IN SHAMLEY GREEN

Vicar - The Revd Sally Davies, The Vicarage, Church Hill, Shamley Green GU5 0UD
vicar@shamleygreen.church 892030

CHURCH

Other Clergy The Revd Gussie Walsh
275645

Churchwardens

Penny Hodgson 898779
Margaret Goodchild 890773

Parish Safeguarding Officer Diane Savage
safeguarding@shamleygreen.church

Pastoral Assistant

Penny Hodgson 898779
pennyhodgson@uwclub.net

Parochial Church Council

Hon. Secretary Clare Stevens 893211
pccsec@shamleygreen.church

Hon. Treasurer Tony Robinson 229141

Planned Giving Officer

Nick Russell-Davis 890719
nrusselldavis@compuserve.com

Organist/Director of Music

Rob Blythe 07931 734145

Lettings Secretary

lettingsec@hotmail.co.uk

Church Flowers Claire Jenkinson 893016

Good Neighbours Scheme

Alison Harding 893457

Parish Magazine see inside front cover for
contacts and information

Website

Contact info@shamleygreen.church

VILLAGE

Arbuthnot Hall Alison Bull 892254

Arbuthnot Hall 200 Club

Neil Harding 893457

Badminton Club Malcolm Smith 893701

VILLAGE continued

Community Room Garden Close

Wonersh Parish Council 892601

Cricket Club P Brodbin 07976037633

Environment Group

Jim Drummond 07795532772

Gardening Club Aurelle Tomkins 892114

Golf Society Tony Hodgson 898779

History Society Philip Dunn 302185

philip.dunn3@btinternet.com

Lordshill Playground

lordshillplaypark@gmail.com

NSPCC Helen Pearce 890526

SHADES Clare Stevens 893211

Speedwatch Simon Tomkins 892114

The Villages Wednesday Club

Ginny Wicks 894873

U3A Wonersh & Shamley Green

Cilla Morris 892348

Village Association

Eppy Anderson 890304

Village Care Penny Hodgson 898779

Lyn Barber 893898

Village Fete Tim Harlow 894884

Waverley Borough Council

Councillor Michael Goodridge 535108

W.I. Deidre 07792741749

Wonersh Parish Council

Clerk Lisa Davidson 892601

Wonersh & Shamley Green (CofE)

Primary School Office 892345

Head Teacher Tim Cheeseman

Wonersh United Charities

Clerk Kevin Garvey 892030

wonershunitedcharities@gmail.com



**Chantries
& Pewleys**

ESTATE AGENTS

“Unlike other agents we have worked with in the past, you genuinely feel like Chantries & Pewleys are acting in your best interests with a long term goal of being the agent you will want to go back to.”

C Hill - Google Review

If you're contemplating selling or letting your property, the Directors of Chantries & Pewleys would like to invite you to accept their offer of a free market appraisal.

Contact us today to book your appointment, without obligation.



@chantriesandpewleys

Cranleigh Sales - 01483 347888

Shalford Sales - 01483 304344

Lettings Office - 01483 405222

chantriesandpewleys.com

cranleigh@chantriesandpewleys.com

shalford@chantriesandpewleys.com

lettings@chantriesandpewleys.com